

# Affittare spazi commerciali



**Volete intraprendere un'attività commerciale nei nostri spazi? Guardate le aree disponibili qui sotto.**

LINEA	STAZIONE	SUBALTERNO	MQ
M1	BANDE NERE	Sub 3	131
M1	CADORNA	Sub 22	55
M1	DE ANGELI	Sub 8	17
M1	GAMBARA	Sub 5	55
M1	PORTA VENEZIA (magazzino)	Sub 8+9	282
M1	RHO FIERA	Sub 5	138
M1	SESTO MARELLI	Sub 3	90
M1	Qt8	Sub 3	66
M1	URUGUAY	Sub 6	46

**Per ulteriori informazioni:**

**ATM S.p.A. – Valorizzazione Spazi Commerciali**

**E-mail: [spazicommerciali@atm.it](mailto:spazicommerciali@atm.it)**

# Affittare spazi commerciali

## M2

**Volete intraprendere un'attività commerciale nei nostri spazi? Guardate le aree disponibili qui sotto.**

LINEA	STAZIONE	SUBALTERNO	MQ
M2	ABBIATEGRASSO	Sub 702	96
M2	CAIAZZO	Sub 3	98
M2	CAIAZZO	Sub 4	39
M2	FAMAGOSTA	Sub 8	137
M2	GESSATE	Sub 5	29
M2	LAMBRATE	Sub 5	45
M2	LAMBRATE	Sub 6	7
M2	LAMBRATE	Sub 7	17
M2	LAMBRATE	Sub 9	35
M2	LAMBRATE	Sub 10	73
M2	LAMBRATE	Sub 11	90
M2	LORETO v.le Abruzzi	Sub 11	47

**Per ulteriori informazioni:**

**ATM S.p.A. – Valorizzazione Spazi Commerciali**

**E-mail: [spazicommerciali@atm.it](mailto:spazicommerciali@atm.it)**

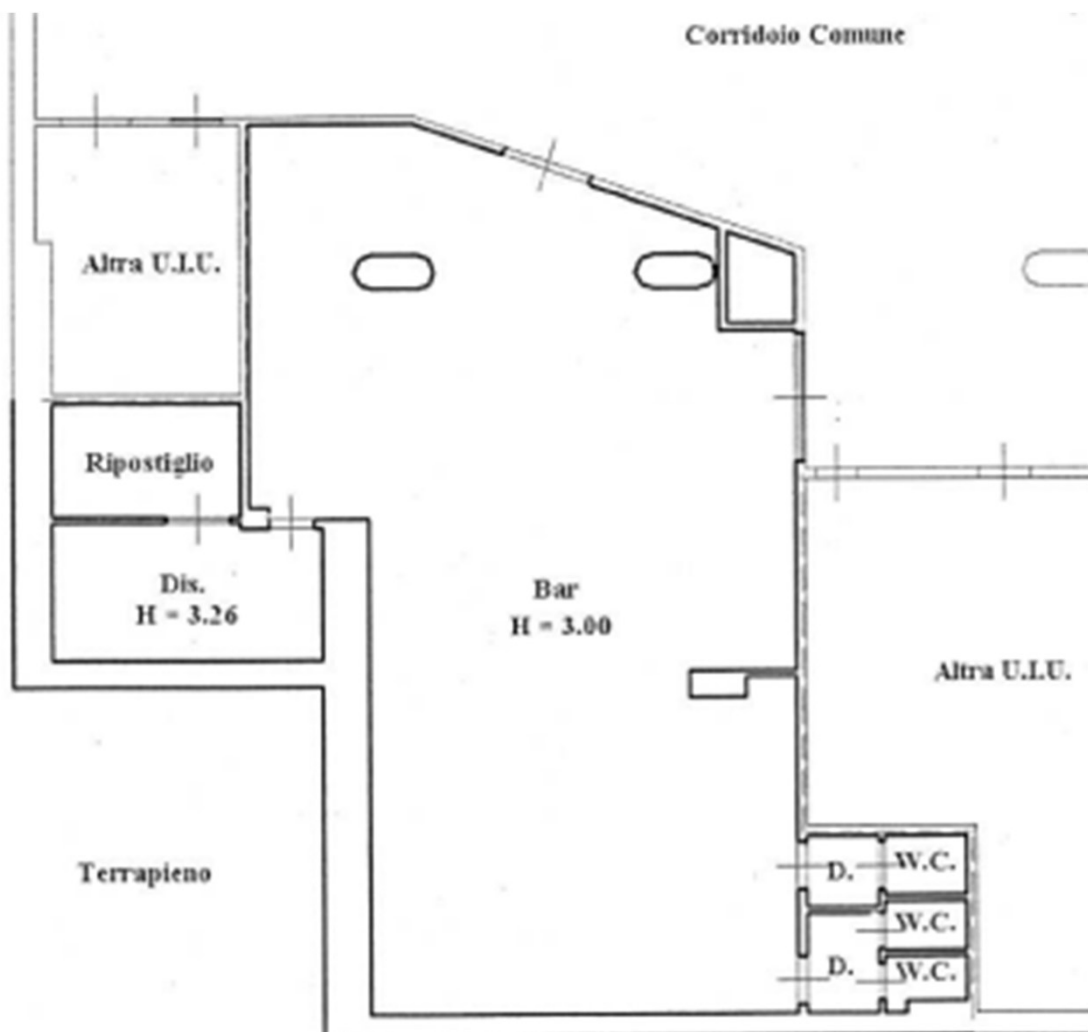
# Affittare spazi commerciali

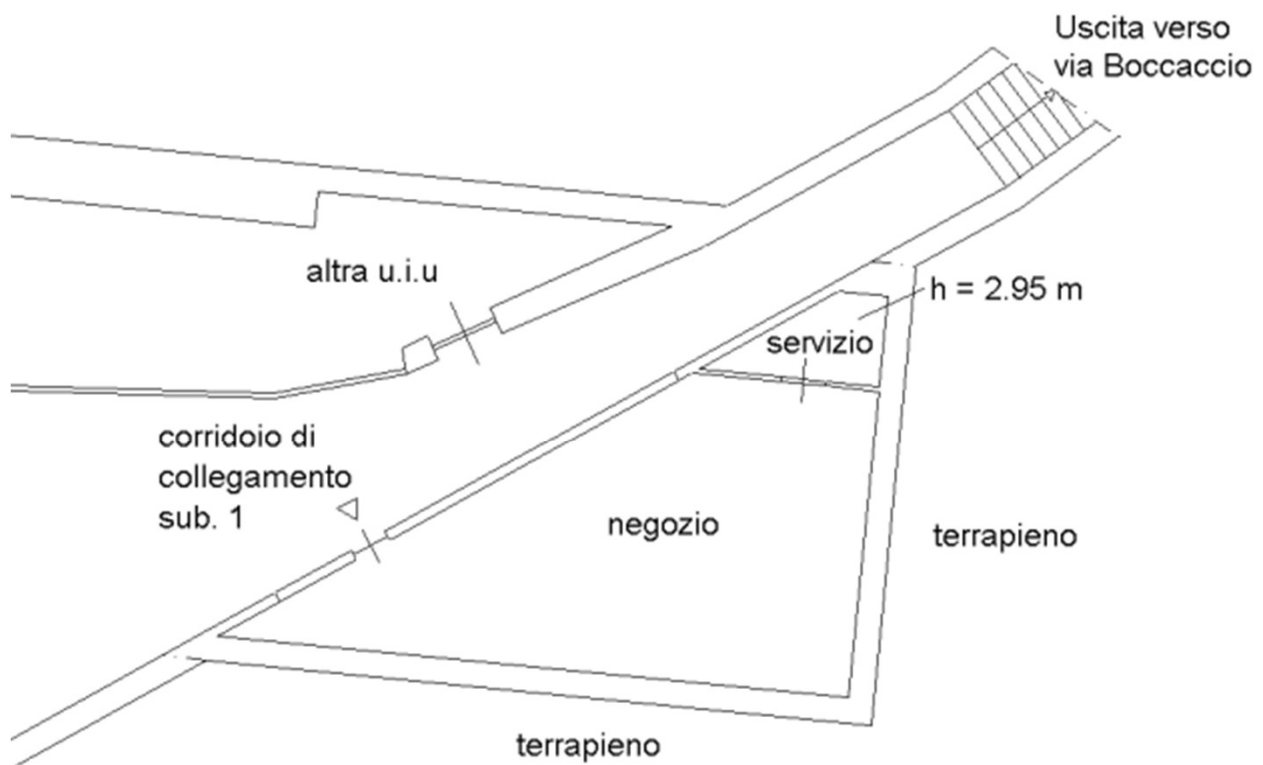
**M3**

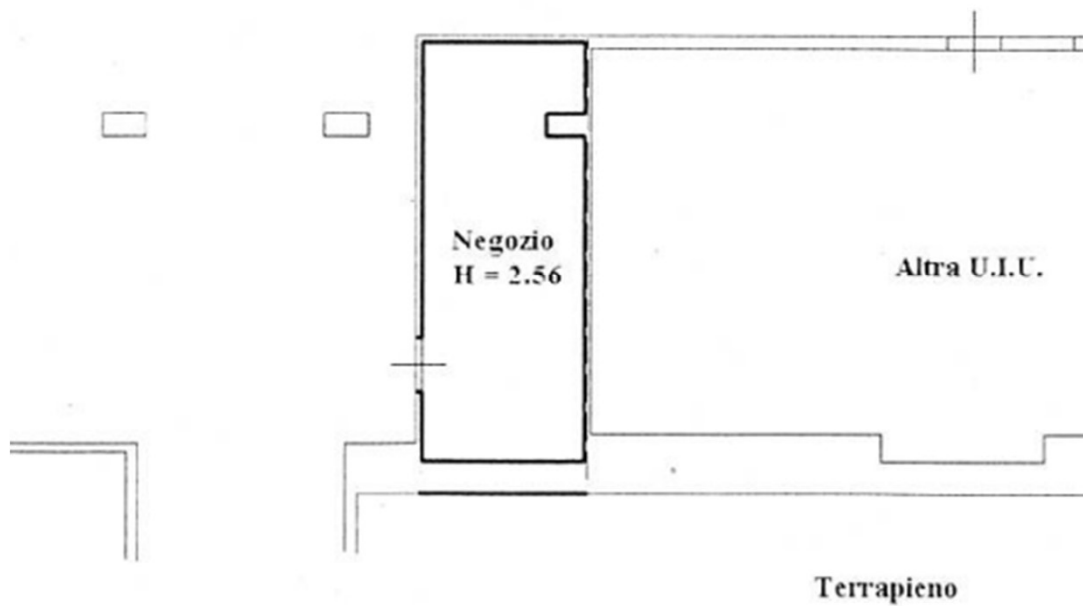
**Volete intraprendere un'attività commerciale nei nostri spazi? Guardate le aree disponibili qui sotto.**

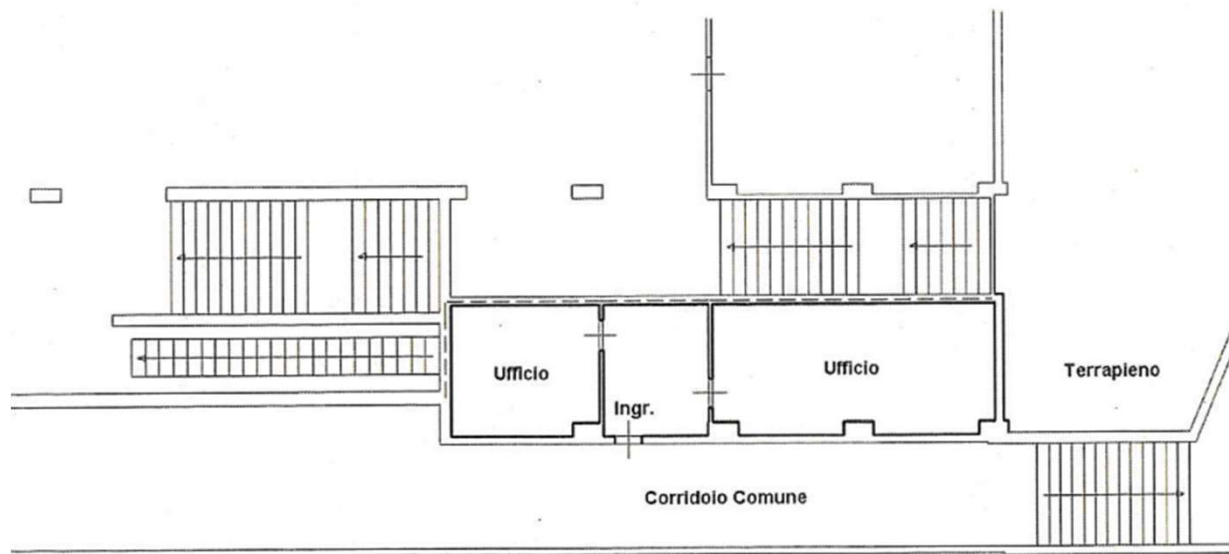
LINEA	STAZIONE	SUBALTERNO	MQ
M3	COMASINA	Sub 4	93
M3	MACIACHINI	Sub 701	65
M3	MACIACHINI	Sub 702	45
M3	ZARA	Sub 3	16

**Per ulteriori informazioni:  
ATM S.p.A. – Valorizzazione Spazi Commerciali  
E-mail: [spazicommerciali@atm.it](mailto:spazicommerciali@atm.it)**

**M1** **BANDE NERE****Subalterno 3****131 Mq****Ex bar**

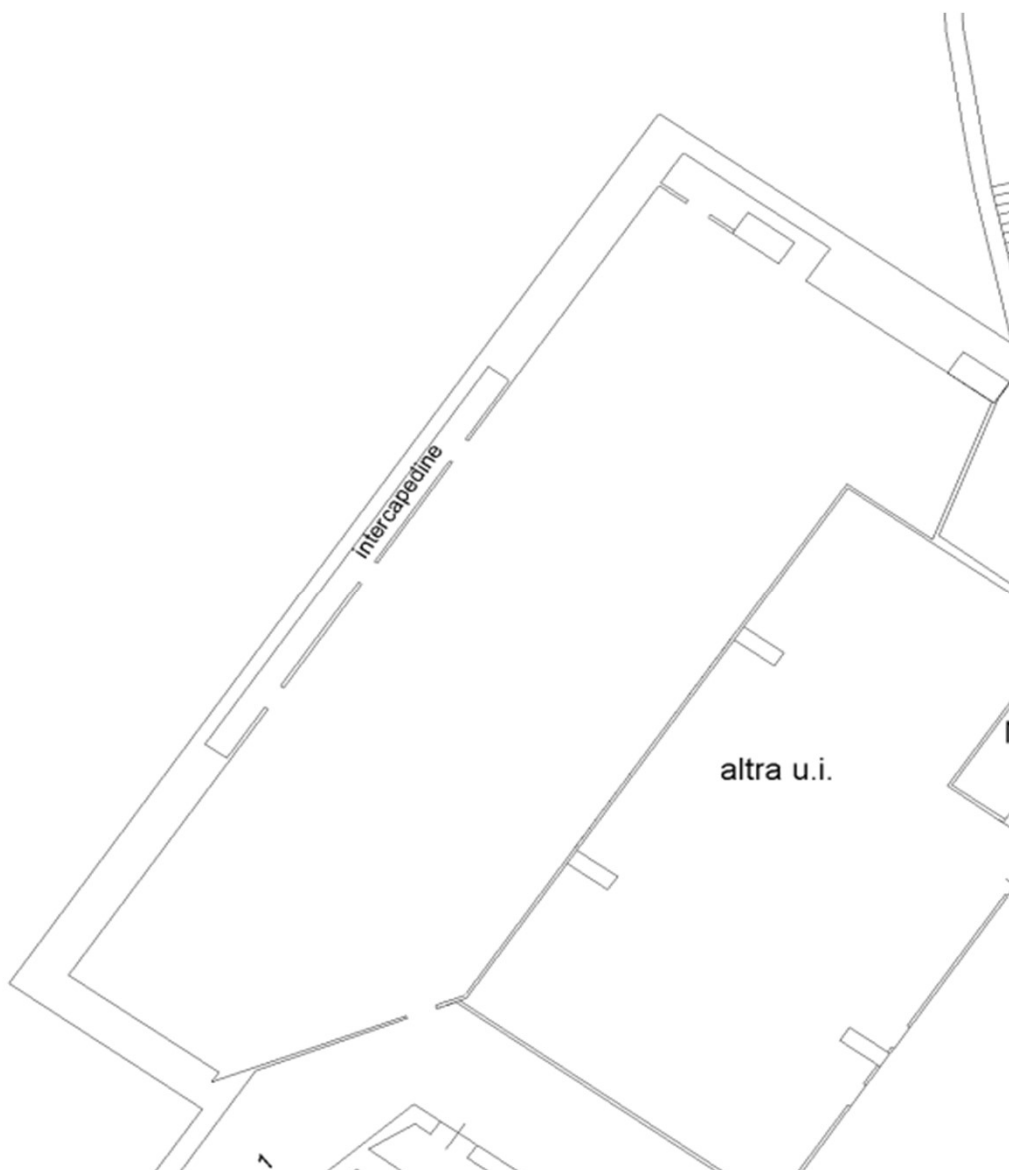
**M1 CADORNA****Subalterno 22**  
**55 Mq**

**M1 DE ANGELI****Subalterno 8**  
**17 Mq**

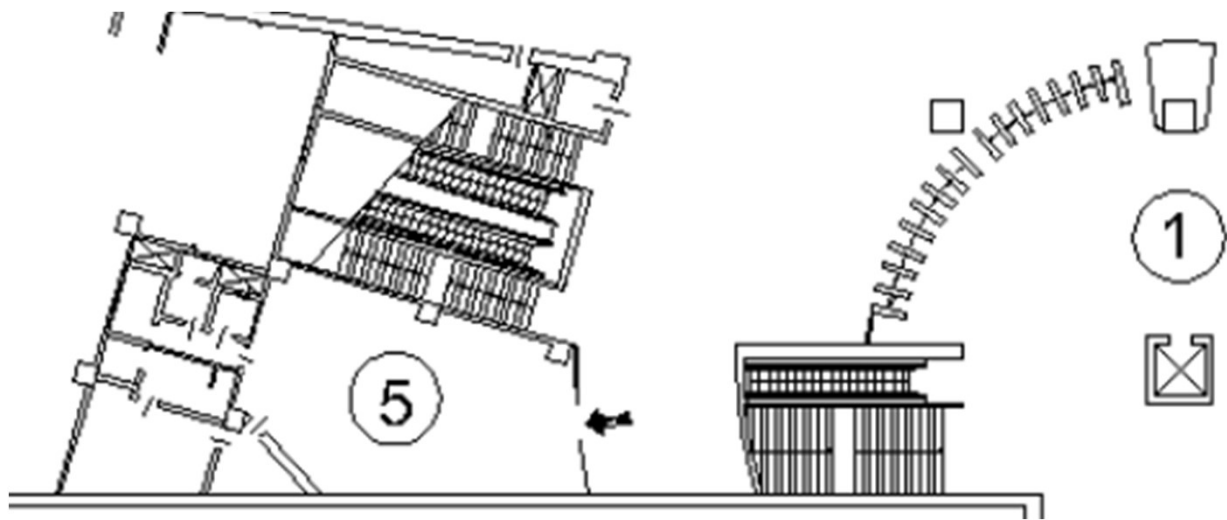
**M1** **GAMBARA****Subalterno 5**  
**55 Mq****PIANO PRIMO INTERRATO**

**M1** PORTA VENEZIA

**Subalterno 8 + 9**  
**282 Mq**  
**MAGAZZINO**

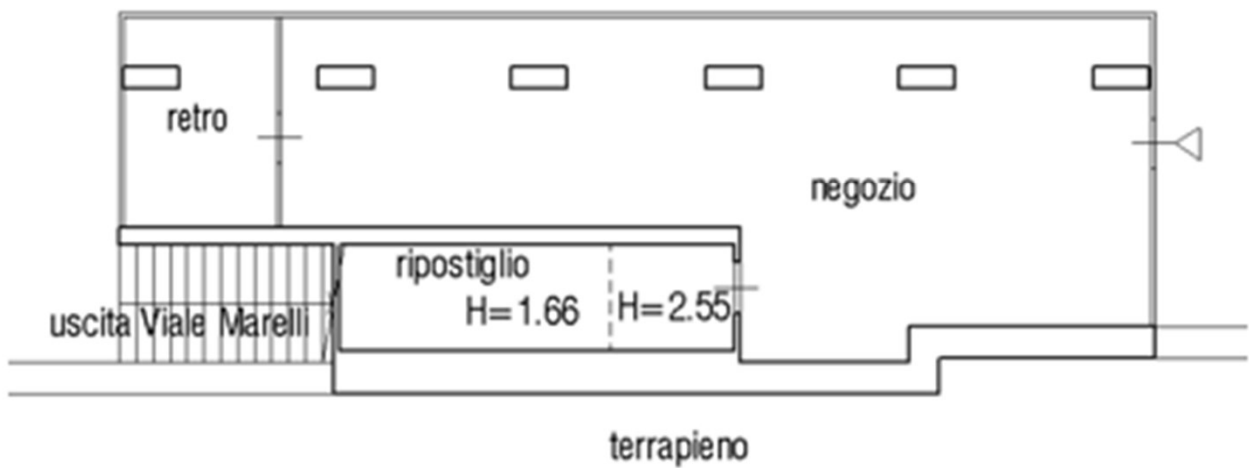


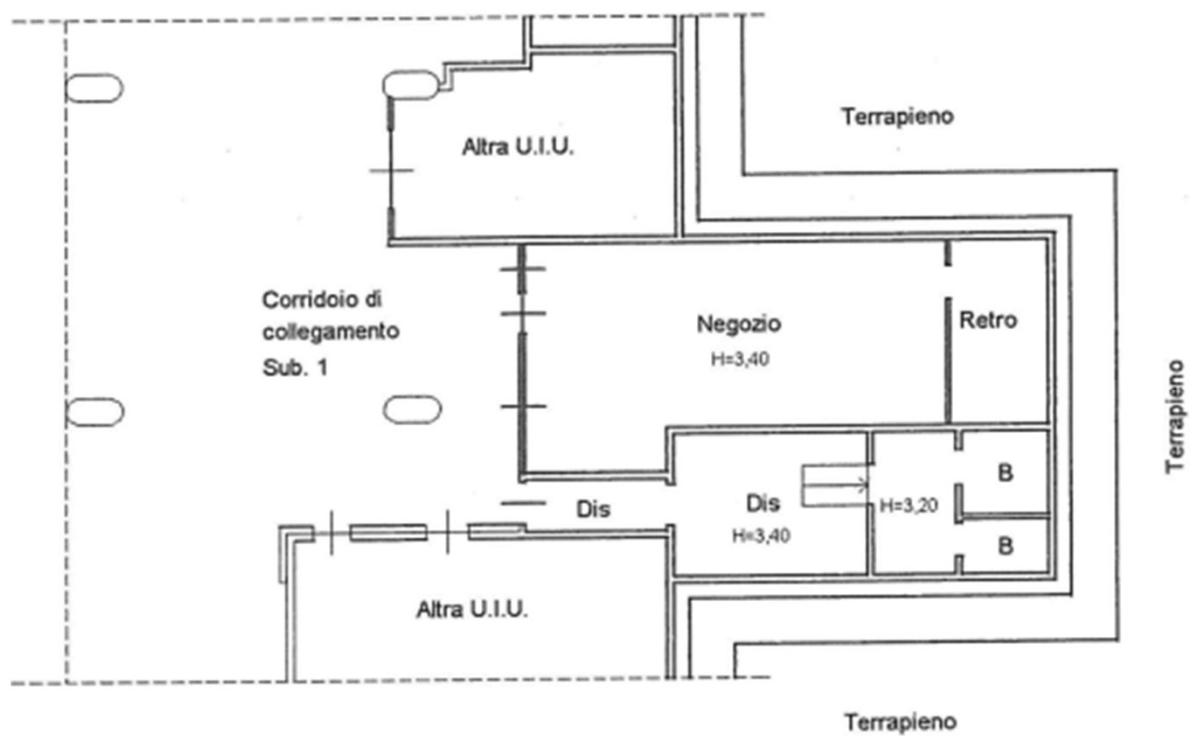


**M1 RHO FIERA****Subalterno 5**  
**137 Mq**

**M1 SESTO MARELLI****Subalterno 3****90 Mq****EX BAR**

passaggio comune - BCNC sub. 1

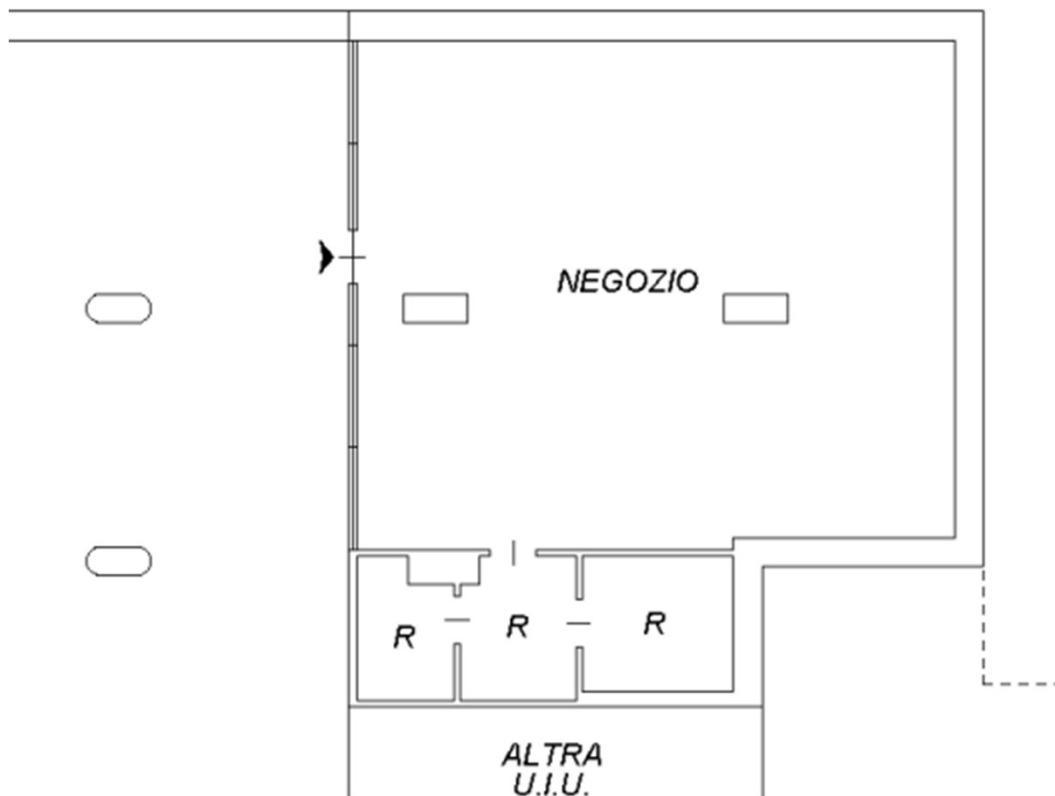


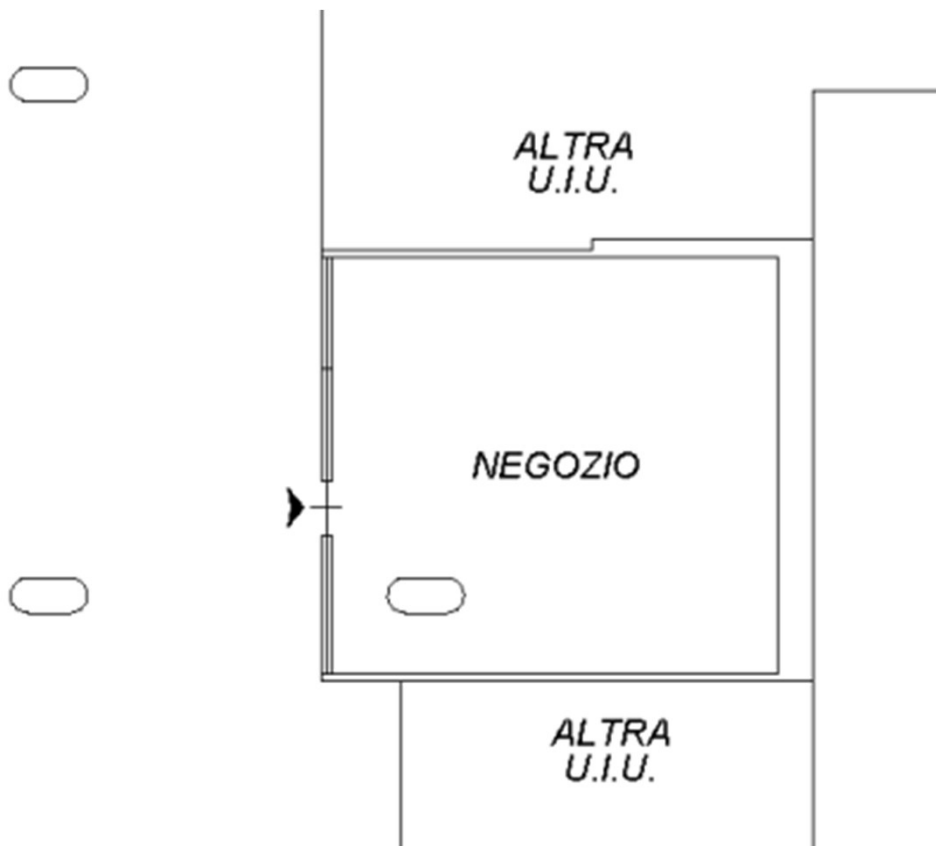
**M1 Qt8****Subalterno 3****66 Mq****EX BAR****PIANO PRIMO SOTTOSTRADA**

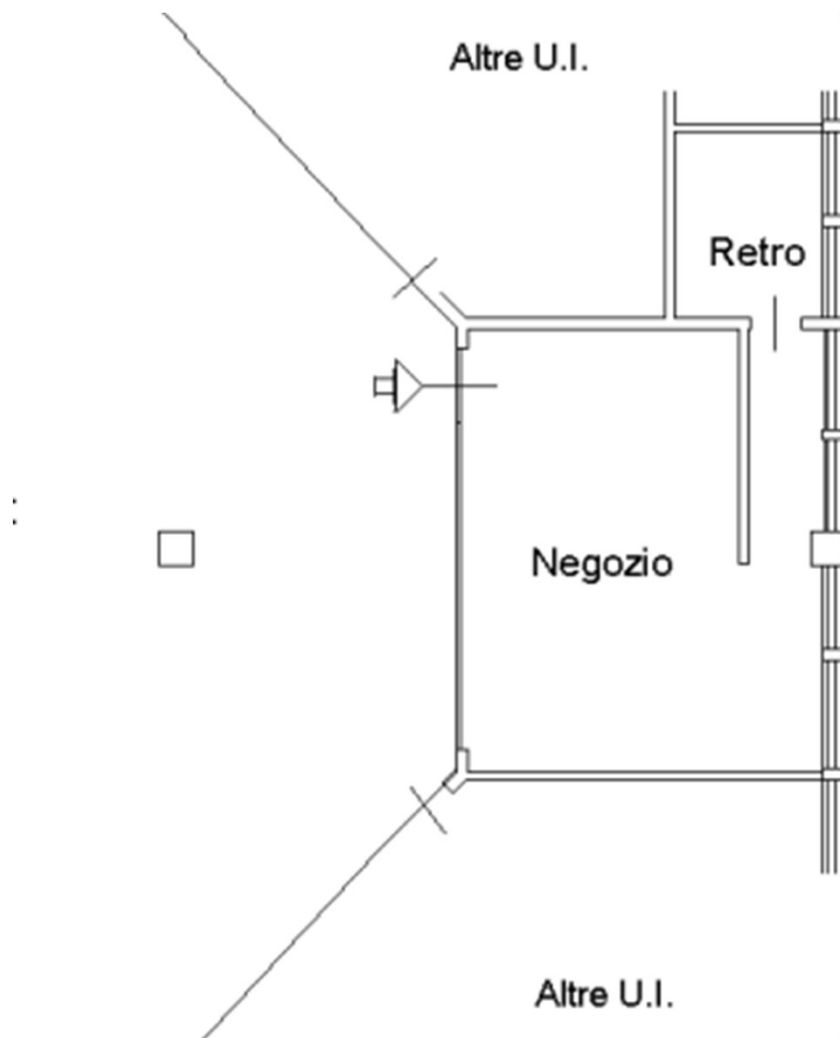
**M1 URUGUAY****Subalterno 6****46 Mq****EX BAR**

**M2** **ABBIATEGRASSO****Subalterno 702****96 Mq**

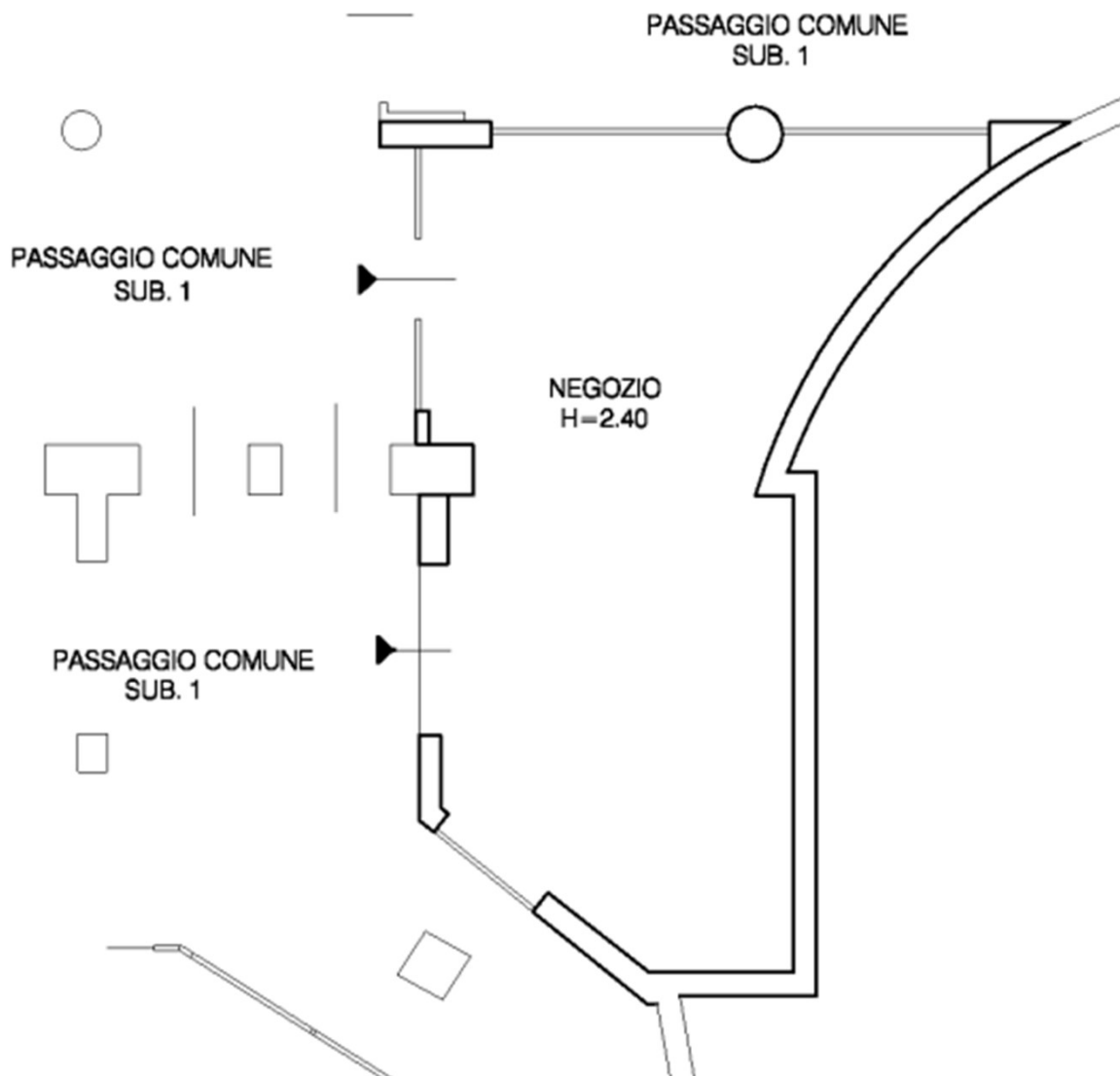
**PIANO PRIMO SOTTO STRADA**  
**(MEZZANINO)**  
**H=295**

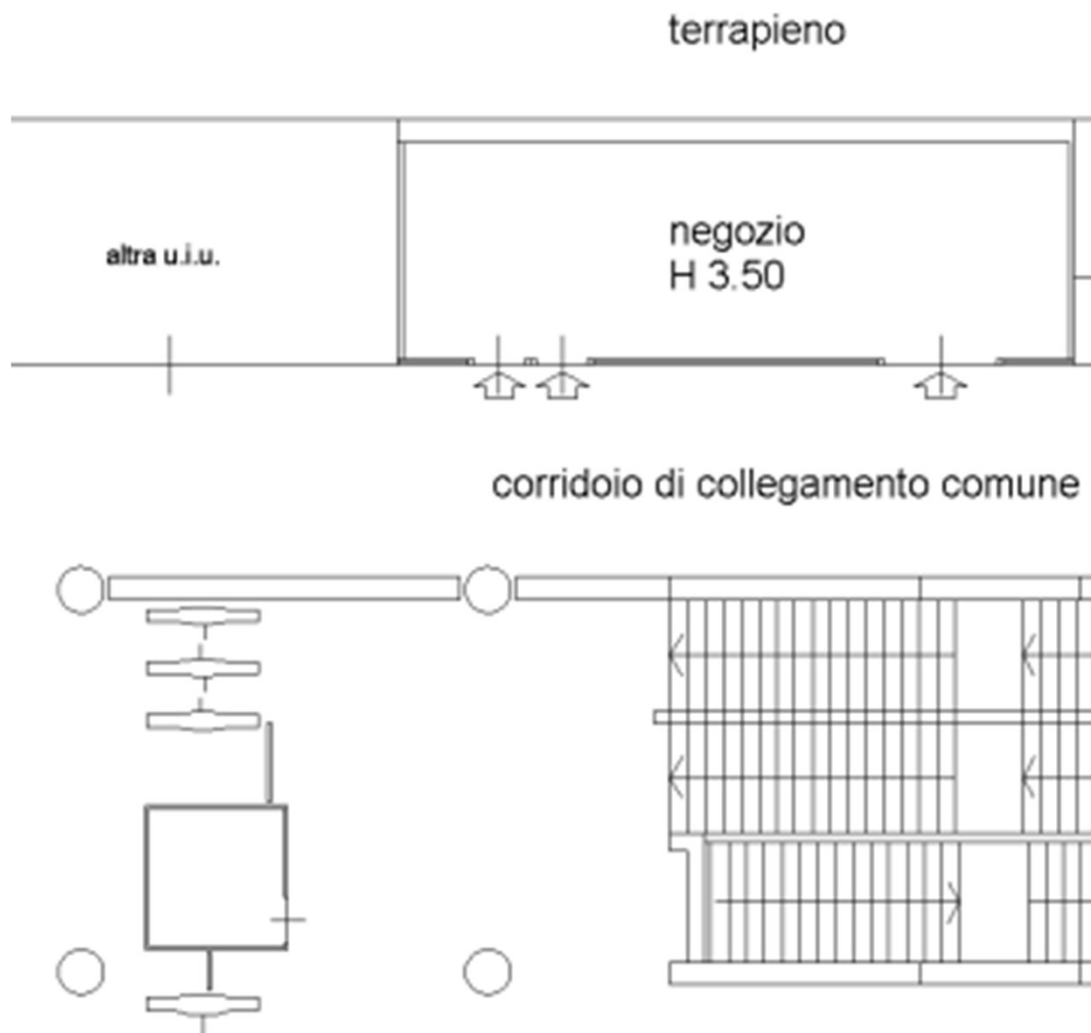
**M2 CAIAZZO****Subalterno 3****98 Mq****EX BAR**

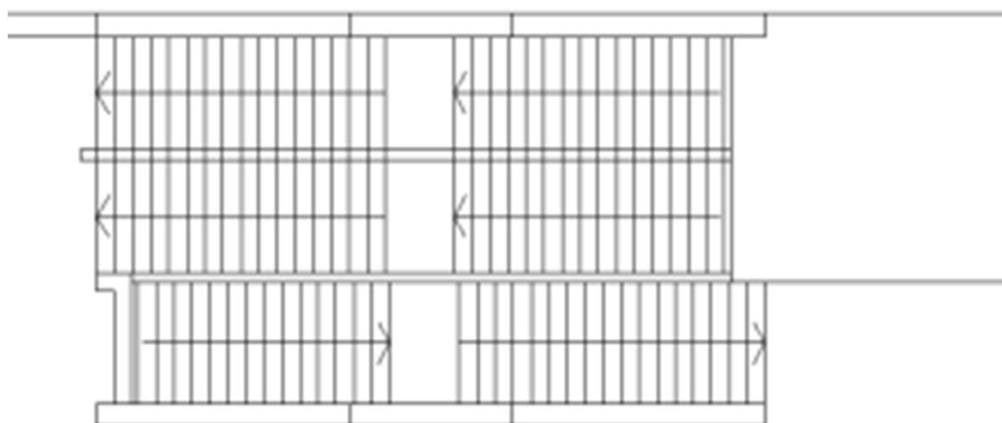
**M2 CAIAZZO****Subalterno 4**  
**39 Mq**

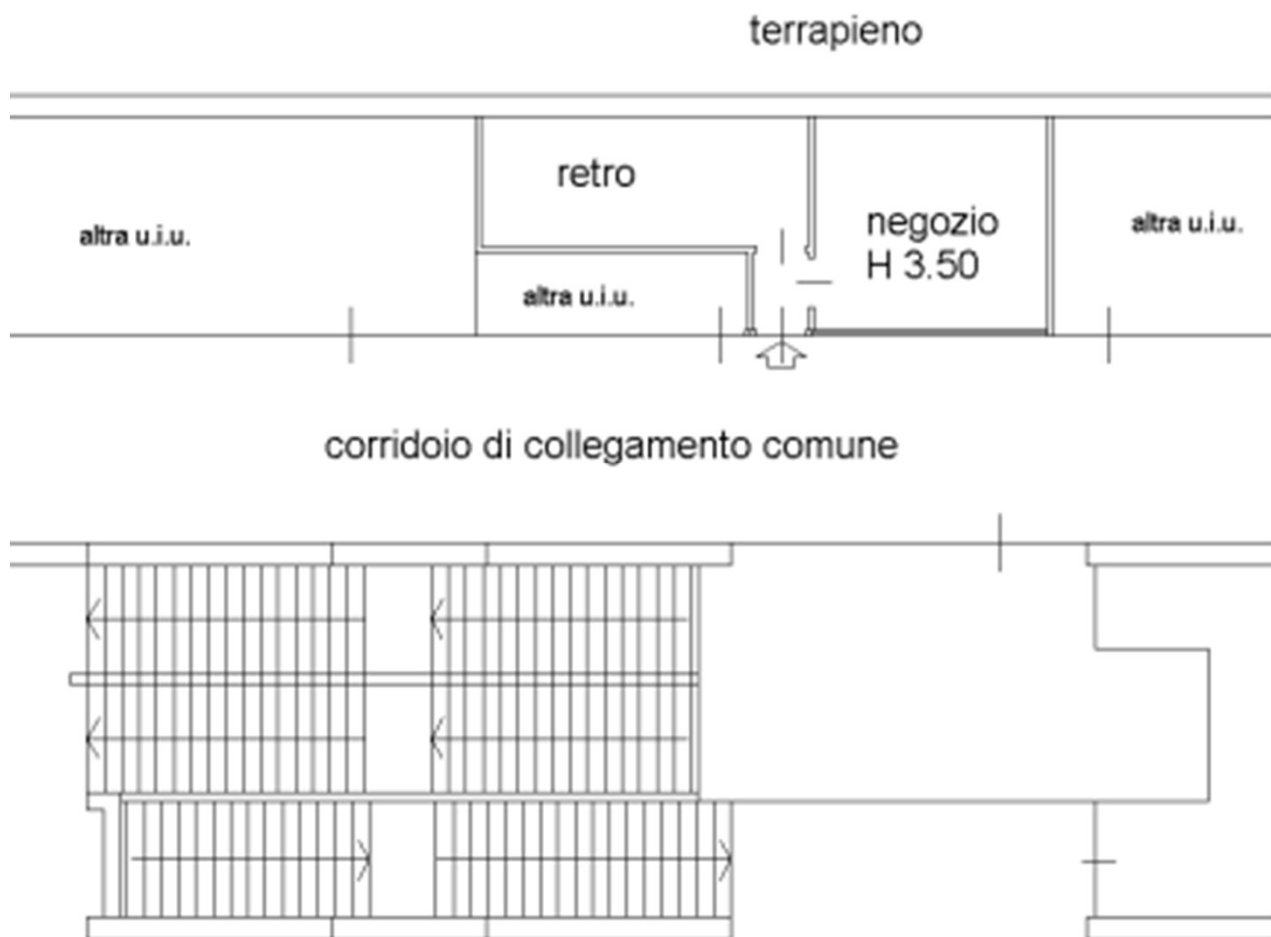
**M2 GESSATE****Subalterno 5**  
**29 Mq**

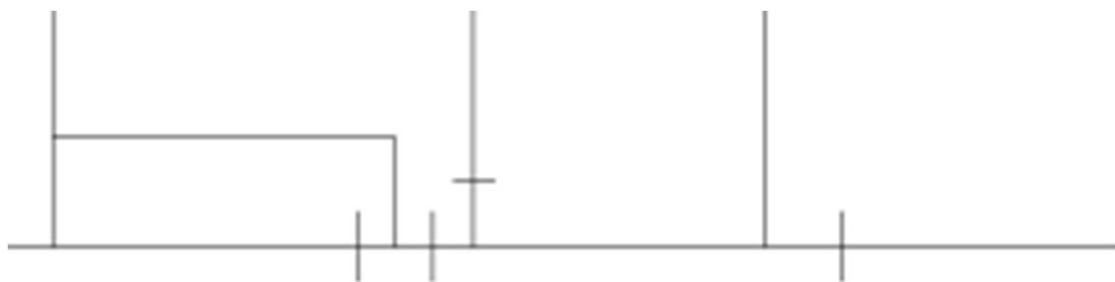


**M2 FAMAGOSTA****Subalterno 8**  
**137 Mq**

**M2 LAMBRATE****Subalterno 5**  
**45 Mq**

**M2 LAMBRATE****Subalterno 6**  
**7 Mq**

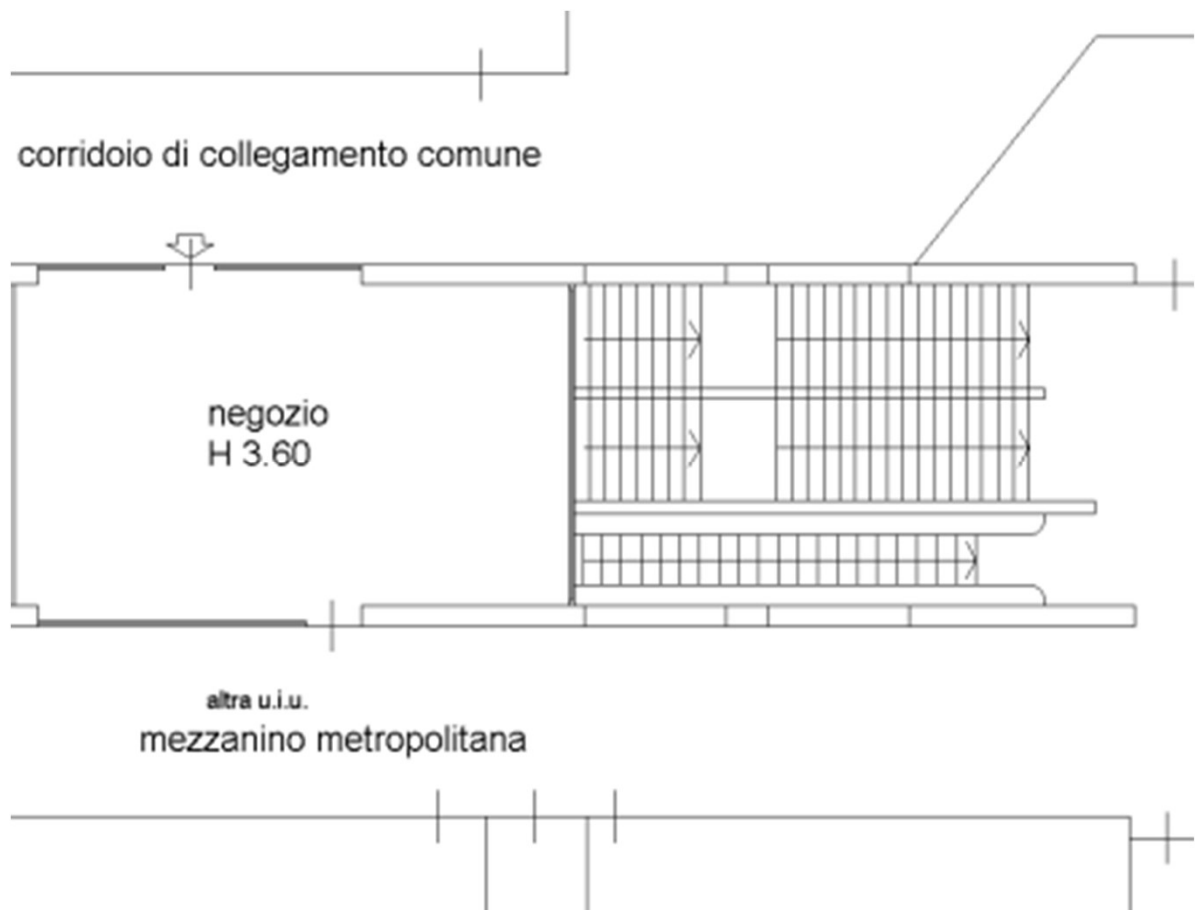
**M2 LAMBRATE****Subalterno 7**  
**17 Mq**

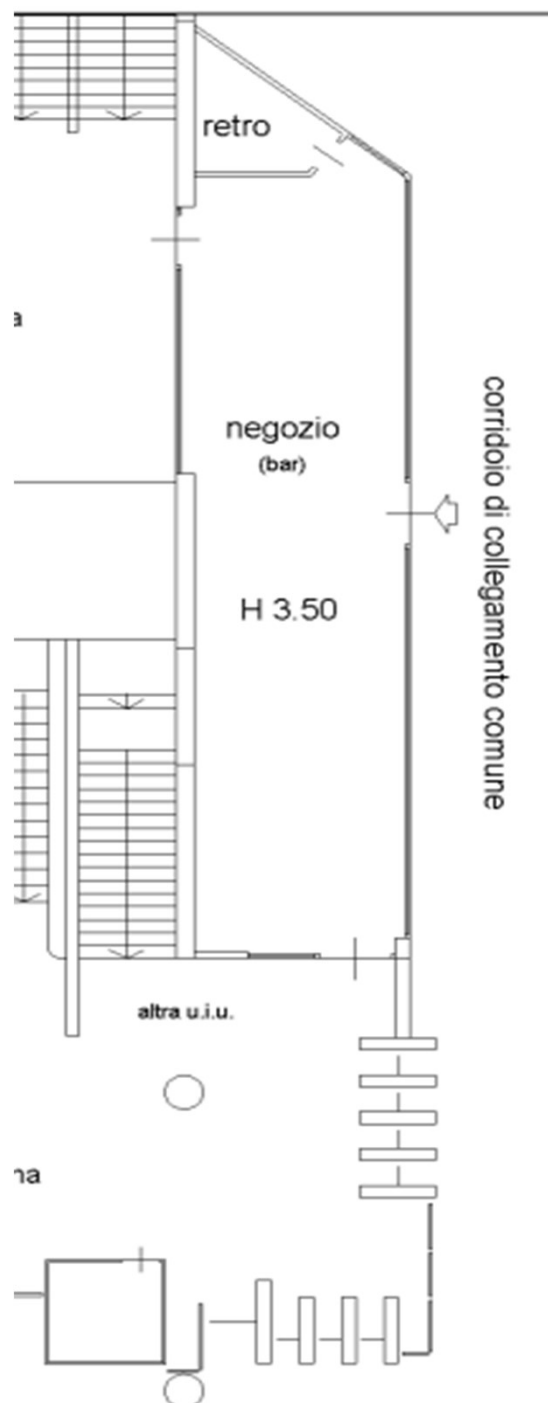
**M2 LAMBRATE****Subalterno 9**  
**35 Mq**

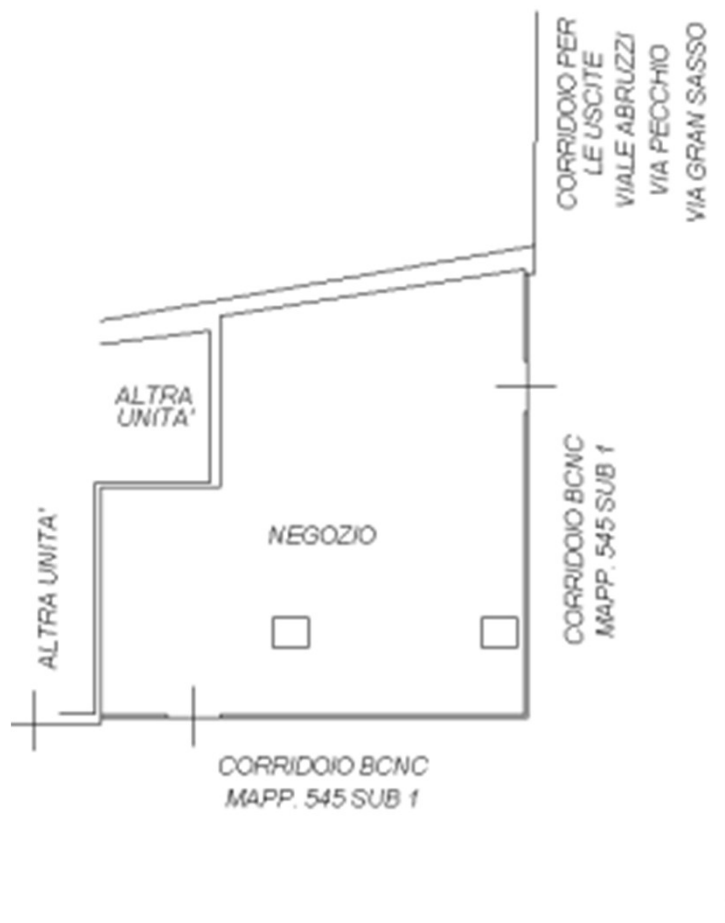
corridoio di collegamento comune



mezzanino metropolitana

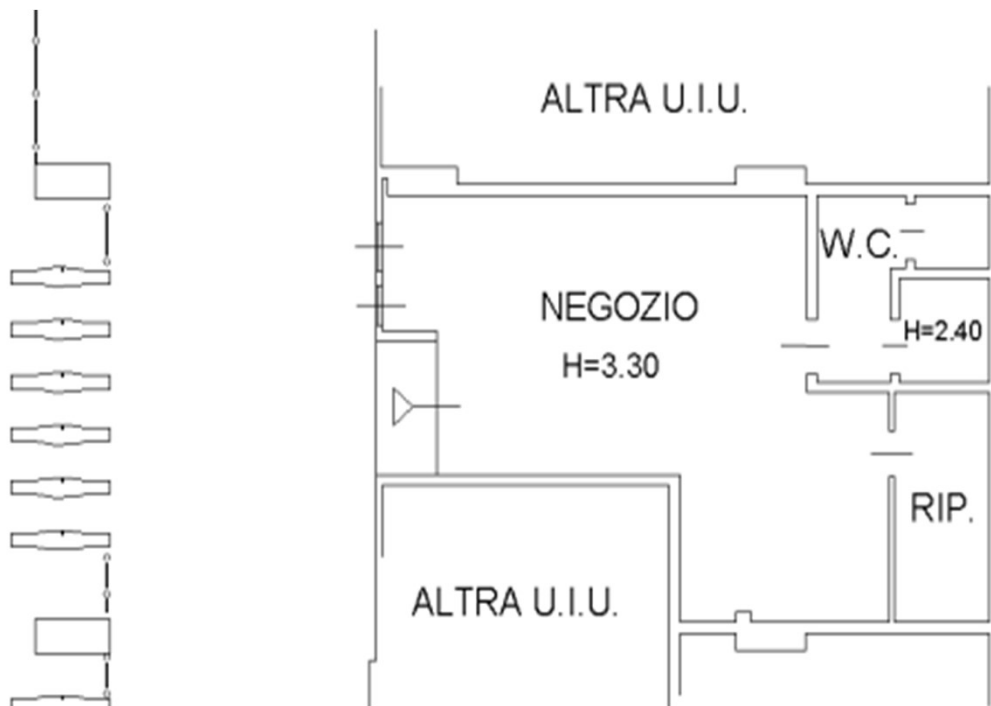
**M2 LAMBRATE****Subalterno 10**  
**73 Mq**

**M2 LAMBRATE****Subalaterno 11**  
**90 Mq**

**M2 LORETO v.le Abruzzi****Subalterno 11****47 Mq**



**M3 COMASINA****Subalterno 4****93 Mq****EX BAR**

**M3 MACIACHINI****Subalterno 701****65 Mq**

**M3 MACIACHINI****Subalterno 702**  
**45 Mq**

**M3 ZARA****Subalterno 3**  
**16 Mq**